

Background

The problem of refugees and migrants settling in camps around Calais & Dunkerque has been growing and we are now at the stage where there are around 5,000¹ in Calais and Grande Synthe, near Dunkerque. The Calais authorities, the inhabitants of the town and the various charities are struggling to provide for this influx. Whilst the British & French Governments have made some efforts, the situation is critical and we have already demonstrated that our Lions Club can make a difference.



The difference these things make to the real life conditions in the camps cannot be underestimated. Whilst some refugees are aiming to get to Britain many are resolved to now make France their home. The Jules-Ferry Day centre in Calais was opened in early 2015 and since then most refugees are now living in the area surrounding the centre. It was for some time a non-official, but tolerated jungle, now it is accepted by the authorities and international charities have access to help. More recently a second area in Dunkerque at Grande Synthe has grown up and with the help of the Dunkerque Mayor and a number of international and local charities some 800-1,000 Kurds are now housed here.



There are charities based locally to help including L'Auberge des Migrants, Association SALAM, Médecins du Monde and a number of NGO's who need spare hands on the ground in Calais. Each in its way provides daily food parcels, clothing, helps with asylum paperwork and helps build shelters.



A few week's ago,² a fire raged though part of the Calais camp, 40 people were injured and some 500 people lost their tents and possessions so there is an immediate need to help provide tents, clothes, shoes and sleeping bags for this group.

In the past few months a substantial number of refugees have now moved

¹ Source Charity Help Refugees

² Source Daily Mail 27 May 2016 19 :06

back to Paris following the closure of half of the Calais camp and over a 500 such migrants were recently removed from the Stalingrad Bridge³ area in Paris where they were sleeping rough on the streets and resettled in emergency homes and hotels around France. This week the Mayor of Paris Anne Hidalgo⁴ has announced the construction of a 1000 bed refugee centre north of Paris to be constructed in the coming 8 weeks.

LCYH provides support in Calais and Dunkerque but also directly supports those refugees who are moving through the asylum process. At the Bonnelles⁵ centre in Yvelines (an old monastery) we send volunteers to help the 80+ asylum seekers create a CV in French to help them more easily find work and integrate into the French system when they are finally resettled into a particular area of France, after this first phase home.

Once the Anne Hidalgo project for the Paris-based centre is better defined we hope to also contribute to direct help here. Nevertheless, there is clearly a critical need for help in Calais and Grande Synthe so our initial projects are based on raising funds for these three areas today.

Proposed Actions

Calais: Project €4,500 Food Supply

L'Auberge des Migrants

<http://www.laubergedesmigrants.fr>

This centre is run mainly by British volunteers who come to Calais for a day, a week or several months to help out. It is where we have established good contact. They provide clothes and food on a daily basis to both Calais and Grande Synthe camps from their warehouse in Calais. We have worked with this team to provide money, food and clothing and essentials.

Their current problems are as follows:

- The warehouse is understaffed.
- They don't have enough food to do distributions.



³ RT News 2 May 07:03 & Daily Express 2 May 09:31

⁴ Daily Telegraph 31/5/16 14:56

⁵ Le Parisien 8 Sept 2015

- Vulnerable groups are left cold due to lack of heat.
- Volunteer numbers are dwindling.

Following discussions with Isabel Skrine, the Donations coordinator for L'Auberge des Migrants and Help Refugees, the charity has asked us to help guarantee a regular weekly supply of essentials to ensure they can continue to support their humanitarian efforts in the 2 camps. In particular, food and the urgent need for gas supplies to enable cooking on site at the camp, which gives independence and autonomy to groups of migrants.

We will set up a weekly purchasing plan for their kitchen section (Calais kitchens), this will entail weekly reviews between LCYH team and the on the ground Calais kitchens team. A weekly sum of money will be issued to the shopping account held at the local Calais supermarket Metro to enable direct purchase of the essential items and a confirmation to LCYH of the actual quantities will be reviewed weekly in advance of the purchase and release of funds. LCYH will hold a weekly call with the local team to confirm what supplies will be purchased, then the monies will be released and a receipt sent to LCYH after purchase. €600 per week will be allocated this way.

To provide a weekly delivery of the equivalent of 1 pallet of:

- X Litres of cooking gas
- X kilos: Basmati Rice
- X kilos: Flour
- X Litres: Cooking Oil
- X kilos: UHT Milk
- X kilos: Tinned Fish
- X kilos: Tinned Beans (preferably white beans)
- X kilos: Tinned Tomatoes
- X kilos: Stock (vegetable) cubes
- X kilos: Sweet rice pudding or similar
- X kilos: Sugar
- X kilos: Onions & other vegetables
- X kilos: Fresh oranges, mandarins, apples
- X kilos: Tea



Grande Synthe: Project €4,500

Association SALAM

<http://www.associationsalam.org/-Nous-contacter->

This is a mainly French based charity operating from some cellars in

Grande Synthe Francoise Lavoisier is the francoise.lavoisier@free.fr. They provide clothes and a hot meal for 200-400 people on a daily basis to Grande Synthe camp. We have worked with this team to provide food and shoes. Recently we purchased 37 pairs of shoes from Decathlon store whilst on a visit to the charity.

Their current problems are as follows:

- They don't have enough food to cook more meals.
- They are in desperate need of shoes for the refugees
- Volunteer numbers are dwindling.

We will set up a weekly purchasing plan for their kitchen section (SALAM Grande Synthe), this will entail weekly reviews between LCYH team and the on the ground SALAM team. A weekly sum of money will be issued to the shopping account held at the local Grande Synthe supermarket COOP to enable direct purchase of the essential items and a confirmation to LCYH of the actual quantities will be reviewed weekly in advance of the purchase and release of funds. LCYH will hold a weekly call with the local team to confirm what supplies will be purchased, then the monies will be released and a receipt sent to LCYH after purchase. €600 per week will be allocated this way.



To provide a weekly delivery of the equivalent of 1 pallet of:

X disposable cups, plates, cutlery.

X Litres of cooking gas

X kilos: Basmati Rice

X kilos: Flour

X Litres: Cooking Oil

X kilos: UHT Milk

X kilos: Tinned Fish

X kilos: Tinned Beans (preferably white beans)

X kilos: Tinned Tomatoes

X kilos: Stock (vegetable) cubes

X kilos: Sweet rice pudding or similar

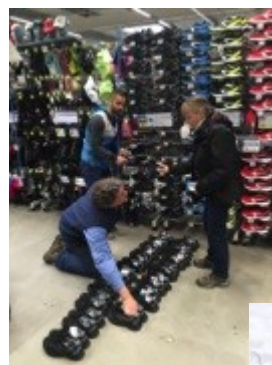
X kilos: Sugar

X kilos: Onions & other vegetables

X kilos: Fresh oranges, mandarins, apples

X kilos: Tea

X pairs of shoes (when needed)



Le Réveil Voyageur: Project € 500

Le Réveil Voyageur

<https://www.facebook.com/lerveilvoyageur/?fref=ts>

This is a French based charity operating from Calais to provide daily hot drinks and bread to the Calais camp and to increase awareness and support from the Calais community to the problems and challenges of the migrants and refugees. Our contact is Frédérique Scaccia fred.scaccia@hotmail.fr. They collect bread and pastries from the local rough their direct contacts and they also provide emergency needs often for women and children who are obviously much more vulnerable.

They have recently organised an exhibition in the library of the Calais University to illustrate the plight of the refugees.

Their current problems are as follows:

- They need to buy more drink supplies and disposable cups.
- They are not able to respond to needs of newly arrived women and children who have needs of shelter and basic emergency supplies.
- They have an irregular access to a minibus to deliver supplies and to bring people to the camp.
- They need to increase the awareness of their actions

We will arrange for a one- off delivery of the following amounting to €1000:

X kilos of Tea

X kilos of chocolate

X kilos of coffee

X litres of UHT milk

2 x Bivouac tents + 6 sleeping bags

Centre d'Accueil for Refugees at Bonnelles (Yvelines) : Project € 500

This newly created centre welcomes on a regular basis migrants and refugees newly arrived in France , principally from Syria and Iraq but also from Tibet and Afghanistan. They are allocated a place by the French Government whilst awaiting their formal acceptance, lodgings and a work permit in France.

There are on average between 40-60 refugees (aged from 16-60, men and women) and their average stay is 3-4 months before being allocated housing somewhere in France.

LCYH have been supporting the Bonnelles team since November 2015, principally by helping the migrants to develop and write their own professional profile (C.V.) translated from English into French which the migrants will then use to try to obtain employment.

When the refugees arrive they are often in a pitiful state with minor ailments, skin disorders and problems.

They have access to a local Doctor (GP) who gives his time voluntarily as the migrants although under the protection of the French government have no rights to State medical treatment or for any prescribed drugs or medical products (other of course in the event of a medical urgency).

Consequently there is a need to provide simple basic medical supplies (bandages, plasters, antiseptic, pain killers, other OTC products) which can be provided on a needs basis when the refugees arrive at Bonnelles.

We propose to buy an emergency stock so that these supplies can be used for at least the current inmates of the Bonnelles Centre and hopefully provide a stock which will last for a few months.

We will arrange to purchase and organize a one-off delivery for Medical supplies and OTC medical products to a maximum value of 500€.

LCYH : OUR REASONS WHY....

1. **An urgent humanitarian need** for which there is currently inadequate reliable State provision and support, notably in France, and that despite the positive communication by the government to indicate its readiness to welcome more refugees.
2. Basic needs which are immediate in terms of a required rapid and effective response but which at the same time describe **a new situation for all of the countries of Europe** which is part of the “new normal” of our everyday lives. Help, care and integration of displaced persons resulting from war, famine or political persecution will be key necessities which all communities will need to take on for greater numbers of people over the coming months and years ahead. “Where there is a need there is a Lion”; if State provision of care is still hesitant and not comprehensive, we can provide immediate support.
3. **The refugee crisis in Europe largely resulting from the conflicts in Syria, Afghanistan and Iraq has been recognized by LCIF as a major humanitarian need.** There is apparently a Lions international European working party which has been created but their thinking and actions are so far undetectable. We can continue to offer at least basic support whilst the system and policies progressively are put into place.
4. **Lions Clubs located close to large refugee centres (eg Calais) may not be able to offer the same degree of support** due to the political nature of the refugee question and the negative perceptions in the local community which may exist. LCYH with its more international ethos and not being linked to a community does not have this disadvantage; indeed it would be preferable to be able to link with our Lions Clubs who have the same desire to help these refugees.
5. **LCYH has access to the expatriate and the ‘international’ non-French communities** living in the west of Paris region which generally have favourable attitudes to providing humanitarian assistance of this nature, and who are perhaps less sensitive to the “political” issues here within France and have the means and household effects to support donations of both money and materials.
6. **Our LCYH project-based spirit** means that we are able to react quickly to events and to respond to an unfolding situation (eg Bonnelles)